

# \$381,000 - 2 Ketcham Pl, Melville

MLS #2781384

## \$381,000

4 Bedroom, 2.00 Bathroom,  
Residential on 0 Acres

N/A, Melville, Ny

Adorable And Charming With Open Floorplan.  
Great Size Rooms, Large Bedrooms, And  
Plenty Of Storage. Close Proximity To Rt 110  
Business Corridor, Great Shopping,  
Restaurants, Major Parkways, West Hills  
County Park Horseback Riding And Dog Park.  
Half Hollow Hills Schools. Make Sure This Is  
On Your List To See!

Built in 1957

## Essential Information

MLS #	2781384
Price	\$381,000
Bedrooms	4
Bathrooms	2.00
Full Baths	2
Acres	0.12
Year Built	1957
Type	Residential
Sub-Type	Det
Style	Cape
Status	Closed
Taxes	\$7,939

## Community Information

Address	2 Ketcham Pl
Subdivision	N/A
City	Melville
County	Suffolk



State Ny  
Zip Code 11747

### Interior

Heating Hw  
Has Basement Yes  
Basement Full Basement, Lots Of Storage, Above Ground Oil Tank

### Exterior

Lot Description .13  
Construction Frame

### School Information

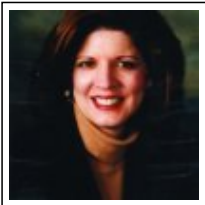
District Half Hollow Hills

### Additional Information

Date Listed July 16th, 2015  
Days on Market 236

### Listing Details

Listing Information Provided Courtesy of: Daniel Gale Agency Inc



**Agent Name** Marie-Denise Kratsios  
**Designation** Associate Real Estate Broker  
**Office Phone** 631.427.6600  
**Cell Phone** 631.875.2844  
**Email** [mariedenisekratsios@danielgale.com](mailto:mariedenisekratsios@danielgale.com)



The source of the displayed data is either the property owner or public record provided by non-governmental third parties. It is believed to be reliable but not guaranteed. This information is provided exclusively for consumers' personal, non-commercial use.

Information Copyright 2018, Multiple Listing Service of Long Island, Inc. All Rights Reserved.